



GOLDEN COUGAR CO., LTD.

COMPANY PROFILE

OUR SERVICES



CRUSHING AND SCREENING



ASPHALT PAVING



SURVEYING



CANAL CONSTRUCTION



ROAD CONSTRUCTION



EARTHWORK

POWERFUL MOVEMENT TO POWERFUL ACHIEVEMENT

www.goldencougar-mm.com

POWERFUL MOVEMENT TO POWERFUL ACHIEVEMENT



Excavator



Road Roller



Bulldozer



Backhoe



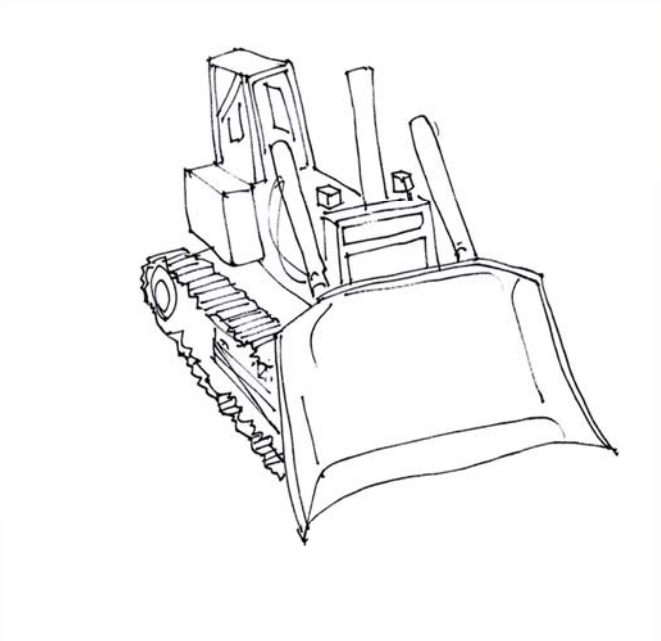
Wheel Loader



Crane



Dump Truck





Contents

- About Us
- Services
 - ▶ Earthwork
 - ▶ Road Construction
 - ▶ Asphalt Paving
 - ▶ Crushing and Screening
 - ▶ Canal Construction
 - ▶ Laboratory testing & field quality control for fill materials
 - ▶ Surveying and site preparation works
- Equipments
- People
- Projects
- Health , Safety and Environment



POWERFUL MOVEMENT TO POWERFUL ACHIEVEMENT



About us

Vision

To provide quality service and respond to requirements of our clients.

Mission

Deliver efficient performance while doing construction works through our experienced professionals and advanced machinery and equipment.

Managing Director's Message

We focus to deliver exceptional value for our clients by providing quality services and efficient performances.

With our well experienced, professional team and our advance machinery and equipment, Golden Cougar is committed to deliver valued, quality services and business solutions.

Htin Aung Kyaw

Managing Director



POWERFUL MOVEMENT TO POWERFUL ACHIEVEMENT

About us



History

We started our first project of earthworks for landscaping and site preparation at Thabaung Pulp Mill in Ayeyarwaddy Division during 2001.

In 2005 Golden Cougar Company Limited was established as an Earth moving and Construction Company.

After that the Company continued working in earthwork related construction projects, railways projects, highways and road constructions projects, residential and industrials area developing works and etc..., implemented by the departments and ministries throughout Myanmar.

With a steady growth, we have a qualified professional, well experienced team and an extensive fleet of advanced machinery and equipment. We have a good team work ethic so we can promote coordination with our clients through effective communication and cooperation in with we give job satisfaction.



POWERFUL MOVEMENT TO POWERFUL ACHIEVEMENT

About us









Our Clients



POWERFUL MOVEMENT TO POWERFUL ACHIEVEMENT



Services

-  Earthwork
-  Road Construction
-  Asphalt Paving
-  Crushing and Screening
-  Soil and Concrete Laboratory
-  Surveying and site preparation works



POWERFUL MOVEMENT TO POWERFUL ACHIEVEMENT



Earthwork



With our employees, well trained and with years of skill and experience, using a vast array of machineries and equipments, we can perform a range of services relating to earthmoving industry.

For many years, Golden Cougar has increased skill, capability, talent and capacity in commercial earthmoving so we can provide our clients with better value and great success.

Various aspects of earthmoving have been undertaken by the company and these includes;

- Railway embankment, landscaping, landfills, land developments
- Large scale earthmoving works
- Large earth works for road construction and industrial projects
- Environmentally sensitive bulk earth works in difficult locations.
- General site works and site preparation
- Construction of embankment for storage reservoirs ranging in size from 10 millions gals to in excess of 100 millions gals for industrial and agricultural sectors



POWERFUL MOVEMENT TO POWERFUL ACHIEVEMENT



Road Construction



Golden Cougar's operations on road construction range from initial site clearance to final paving including material processing to optimize the use of available materials.

Along with road construction, we also perform construction of box culverts, laying pipe culverts and excavation of side drainage systems.

Golden Cougar started road construction projects from Pyin Oo Lwin to Mogoke in Mandalay Region in January, 2010.



POWERFUL MOVEMENT TO POWERFUL ACHIEVEMENT



Asphalt Paving



Our Asphalt plant and equipment for high quality asphalt paving.

LINNHOF Mobile Asphalt Mixing plant TSD-1500 (90-100 tons/hr.)

CAT Asphalt Paver AP655D



POWERFUL MOVEMENT TO POWERFUL ACHIEVEMENT



Crushing and Screening



We start crushing and screening work we can process and supply stone aggregate as required by our clients.

Our Metso Mobile Crushing and Screening plant.

(NW80 Primary Mobile Jaw Crusher + NW100GPC Secondary Mobile Cone).

NORDBERG NW 80 - NW 100GPC Crushing and Screening Plant (Mobile)



POWERFUL MOVEMENT TO POWERFUL ACHIEVEMENT



Soil and Concrete Laboratory



Our company has own soil and concrete laboratory with skilled technicians.

SOIL LABORATORY TESTS

(ASTM/AASHTO std. are adopted)

Soil Tests

- Water content
- Specific gravity
- Particle size distribution
- Atterberg's limits test
- Standard compaction
- Modified compaction
- Dispersibility, Swelling
- CBR value test
- Field density test
- Sand cone test
- Core cutter test
- Plate bearing test

CONCRETE LABORATORY TEST

➤ **Acceptance Test**

Cement setting time, fineness and etc.

- Aggregates sieve Test (FM)
- Specific Gravity Test
- Absorption Test
- Soundness Test

Concrete Strength Test

- Compressive Strength Test
- Slump Test



POWERFUL MOVEMENT TO POWERFUL ACHIEVEMENT



Site Survey



Total Station
Topcon GT3005LN



Total Station
Pentax R-1505N



Theodolite
Topcon DT-205L



Auto Level
Topcon AT-G2



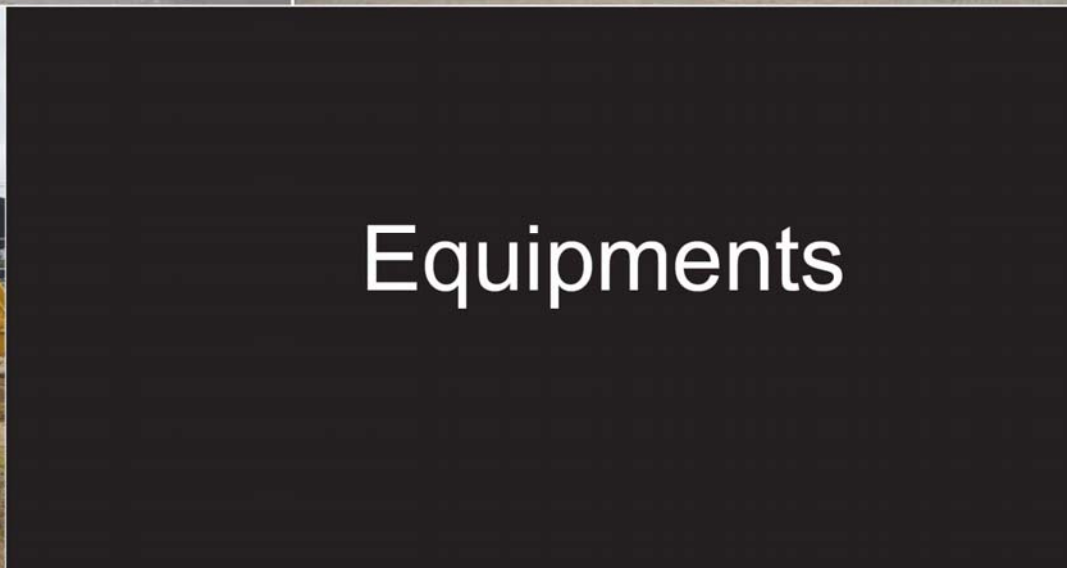
Digital Level
Leica (Sprinter-50)

Land and site surveying services with our survey team and modern survey instruments.

We can provide site survey, assessment and site preparation work for urban and rural development projects.



POWERFUL MOVEMENT TO POWERFUL ACHIEVEMENT



POWERFUL MOVEMENT TO POWERFUL ACHIEVEMENT



Equipments



As our vision "To Provide quality service and requirements of our clients" Golden Cougar Company has an extensive fleet of advanced machineries and equipments to participate in small to large scale earthmoving and road construction projects done on schedule, within budget, to the specifications set by the clients.



POWERFUL MOVEMENT TO POWERFUL ACHIEVEMENT



Equipments



EXCAVATORS

- KOBELCO SK75SR-3
- CAT 320D, 325D
- CAT 329D , 336D





Equipments



DOZER CAT D7G



DOZER CAT D7R



MOTOR GRADERS CAT 120H, 140H



MOTOR GRADERS CAT 140K



WHEEL LOADERS CAT 950GC



SEM WHEEL LOADERS 636D

POWERFUL MOVEMENT TO POWERFUL ACHIEVEMENT



Equipments



ROLLERS

- CAT CW34 PNEUMATIC TIRE ROLLER
- CAT CB34B UTILITY COMPACTOR
- CAT CB54B TANDEM ROLLERS
- KAWASAKI K-122
- SAKAI ROLLER
- DYNAPAC ROLLER





Equipments



VIBRATORY COMPACTORS

- CAT CS 533E
- HAMM 2520D
- DYNAPAC CA250PD



BITUMEN SPRAYER



ASPHALT PAVER CAT AP655D



Equipments



DUMP TRUCKS

- SCANIA, NISSAN, HINO,
- SINO TRUCKS, MITSUBISHI

WATER/FUEL BOWSERS

- NISSAN, HINO, SINO TRUCK

SWEEPER BUCKET

- EAGLE SWP-180



Equipments



KATO 25 TONS CRANE



TEREX - 60 TONS MOBILE CRANE



MOBILE CONCRETE DISPENSER



30M3 CEMENT BULK CARRIER TANK TRUCK



CHIPPING SPREADER A310



BUFFALO TURBINE



Equipments



MOBILE CRUSHERS

**NORDBERG NW 80 - NW 100GPC
CRUSHING AND SCREENING PLANT**



MOBILE ASPHALT MIXING PLANT

LINNHOF TSD – 1500



**BRAND NEW STATIONARY WET MIX
MACADAM PLANT WM100**



**TRACTOR HEAD WITH LOW BED
AND HIGH BED TRAILER**

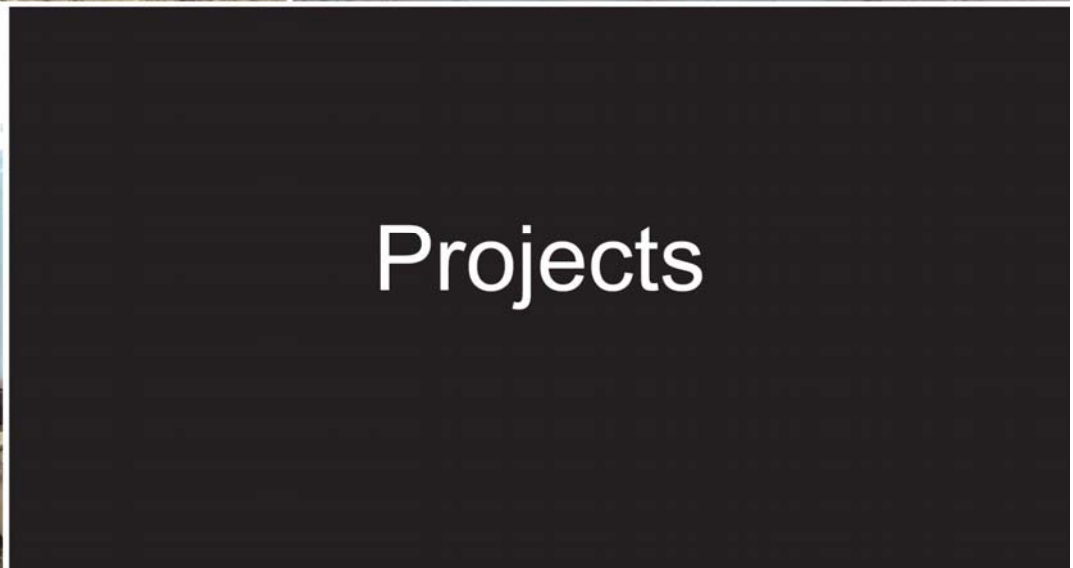
People



Golden Cougar has a professional team consisting of engineers, supervisors, management and technicians. Our foremen and operators are experienced in all type of excavation and earthmoving works. Our employees can work side by side with the site engineers of the projects concerned, maintaining strong connection and good relationship with the clients.



POWERFUL MOVEMENT TO POWERFUL ACHIEVEMENT



POWERFUL MOVEMENT TO POWERFUL ACHIEVEMENT



Projects

- Thabaung pulp factory, Ministry of Industries (1) area: Ayeyarwaddy Region

Site preparation, land levelling and road works for construction of pulp factory.



- Yangon-Mandalay Expressway projects, Ministry of Construction

Preparation of sub-grade for the portion near Hlegu, Yangon, Taungoo, Bago and Phyu, Mandalay Region.



- Thabeikkyin sugar cane plantation Project, Mandalay Region.

1500 Acres Land Preparation works sugar cane plantation.



POWERFUL MOVEMENT TO POWERFUL ACHIEVEMENT



Projects

- Pyay-Aunglan-Sathwar Railways Project, Myanmar Railways

Earthwork excavation in cutting portions of the railwayline near Aunglan, Magwe Region.



- Shopping Complex Naypyitaw

Site preparation and landscaping work for building shopping complex.



- In June 2010, PyinOoLwin-Mogoke Road,
Ministry of Construction
Site clearing, base stripping, preparation of
sub grade, base course and laying of
bituminous road near PyinOoLwin.



POWERFUL MOVEMENT TO POWERFUL ACHIEVEMENT



Projects

- In December 2011, construction of 9.5 kilometers of road and box culverts at Padan-Ngape-Sedoktaya-Longshe-Theegone-Saw road project, Magwe Region.



POWERFUL MOVEMENT TO POWERFUL ACHIEVEMENT



Projects

- In January 2012, company has worked 2.5 miles of road construction including granular sub-base construction, bituminous road and road structures as per construction design in Gangaw-Kalay development road project, Magwe Region.



POWERFUL MOVEMENT TO POWERFUL ACHIEVEMENT



Projects

- In October 2013, construction of 14.5 kilometers of road widening, sub-base, side drains and box culvert at Padan-Ngape-Sedoktaya-Longshe-Theegone-Saw road project, Magwe Region.



- In October 2014, construction of 15 kilometers of new road , sub-base, side drains at Padan-Ngape-Sedoktaya-Longshe-Theegone-Saw road project, Magwe Region.



- In October 2014, construction of 17 kilometers of new road , sub-base, side drains and box culvert at Myaing-Tawma-Gangaw road project, Magwe Region.



POWERFUL MOVEMENT TO POWERFUL ACHIEVEMENT



Projects

- In May 2015, construction of 5 kilometers of bituminous road, hard shoulder and side drains at Seikphyu-Kandaw-Pauk road, Magwe Region.



POWERFUL MOVEMENT TO POWERFUL ACHIEVEMENT



Projects

- In October 2015, construction of 14.5 kilometers of new road, sub-base, side drains and box culvert at Myaing-Tawma-Gangaw road, Magwe Region.



POWERFUL MOVEMENT TO POWERFUL ACHIEVEMENT



Projects

- From February 2014 - April 2015, earth moving of 14 million cubic meters of soil from hill side to sea side and compaction of run way, Coco island airport, in bay of Bengal.



- In October 2015, construction of 3.5 kilometers of new road in rocky mountain area at Myaing-Tawma-Gangaw road project, Htee-Lin township, Magwe Region.



POWERFUL MOVEMENT TO POWERFUL ACHIEVEMENT

Projects

Pyawt Ywa Pump Irrigation Project, Myin Mu Township, Sagaing Region.



Main Canal before construction



Main Canal after construction



Main Canal started operation



Main Canal completed stone lining



Left Main Canal completed concrete



Right Main Canal geotextile laying

- ❖ From June - 2017 to June - 2018: Golden Cougar Co., Ltd. Award Contract No. MYA/17/MMOC/0001 under UNOPS, Re-modeling of Main Canal, Left Main Canal and Right Main Canal total length of 45,870 ft. Works included concrete lining of 8,200 ft, geotextile laying 1,800 ft, impervious soil filling and re-sectioning 10,000 ft, Course Rubble stone lining 1,500 ft and canal reshaping of inside and out berm of canal at Pyawt Ywa Pump Irrigation Project, Ministry of Agriculture , Livestock and Irrigation, Myin Mu Township, Sagaing Region.

- ❖ From June-2018 to October-2018: Additional works awarded Contact No. MYA/18/MMOC/0004 Up grading of canal service road and cleaning of Drainage Canal. Works included 17,000 ft of canal service road 250mm thick sub-base laying 2,700 ft access road sub-base laying and 12,000 cleaning drainage canal.



Projects

KLW-2 (Baw Nig- Su Pum Inn-Kum Par Ni- Tha Yet Pu) Project, Kalaw Township, Taung Gyi Distract, Shan State



- ❖ From July-2017 to July-2018: Golden Cougar Co.,Ltd. awarded Contract No. KLW-2 (Baw Nig- Su Pum Inn-Kum Par Ni- Tha Yet Pu) road total 12.47 Km at Kalaw Township, Taung Gyi Distract, Shan State. Project is implemented by Department of Rural Road Development, Ministry of Construction, and finance by KfW Bank of Germany. (Rural Development Programme Phase II/III) BMZ No. 2015 68 310 and BMZ 2015 68 278.
- ❖ Works included 12.47 Km of embankment and sub-grade laying, 200 mm thick sub-base laying, 200 mm thick base laying, 12.47 Km of Double Bitumen Surface Treatment (DBST) laying, 52 Nos. (1m x 1m) RCC box culverts, 1 No. (3mx3m) RCC box culvert construction, guard rails, guide post, road signs , gabion box retaining wall, stone pitching, tree planting and turfing.

POWERFUL MOVEMENT TO POWERFUL ACHIEVEMENT



Health, Safety & Environment

- ❖ Safety is our core value and our commitment is to provide health and safety environment with a goal of zero incident, zero defect every day and everywhere.
- ❖ Golden Cougar provide a strong Health, Safety and Environment Policy with Health, Safety and Environment manual and training to every person in Golden Cougar's Premise.
- ❖ Golden Cougar comply with all environmental legislation and practices in a standard of Reduce, Reuse and Recycle of resources or materials.
- ❖ Golden Cougar support Health, Safety and Environment, Work system and equipment and every person has a share of responsibility.



POWERFUL MOVEMENT TO POWERFUL ACHIEVEMENT

Branches and Offices

YANGON

291-A, Shwe Dagon Pagoda Road,
Dagon Township, Yangon, Myanmar.

Tel : (95-1) 243628 ~ 30

Fax : (95-1) 241123

E-mail : info@goldencougar-mm.com

SHWE PYI THA (WAREHOUSE)

39/96, U Phoe Hlaing Street,
Shwe Pyi Tha Industry Zone (2),
Shwe Pyi Tha Township, Yangon, Myanmar.

Tel : (95-1) 3618241, 3618320

NAY PYI TAW (BRANCH)

"Chan Myae Nawarat" Yard,
Yangon-Mandalay (Old Highway Road) 264/6 Mile,
Khit Aye Quarter, Zeyar Thiri Township,
Nay Pyi Taw, Myanmar.

Tel : (95-9) 42933 1771

